



Behaviour Policy Addendum Primary  
Addendum for Covid-19 (in line with DfE guidelines)

This Addendum does not replace St Patrick's Catholic Primary School's Behaviour Policy (May 2020)



## **Contents:**

Our Lady of Lourdes Catholic Multi Academy Trust Mission Statement	3
--	---

## **Context**

1. Altered routines for arrival or departure.
2. Instructions on hygiene, such as handwashing and sanitising.
3. Instructions on who pupils can socialise with at school.
4. Moving around the school as per specific instructions (for example, one-way systems, out of bounds areas, queuing).
5. Expectations about sneezing, coughing, tissues and disposal ('catch it, bin it, kill it') and avoiding touching your mouth, nose and eyes with hands.
6. Tell an adult if you are experiencing symptoms of coronavirus.
7. Sharing any equipment or other items including drinking bottles.
8. Expectations about breaks or play times, including where children may or may not play.
9. Use of toilet.
10. Rules about coughing or spitting at or towards any other person.
11. Rules for pupils at home about conduct in relation to remote education.
12. Rewards and sanction system where appropriate.
13. Public Transport.

## **Annex A: Hand washing Poster**

## **Annex B: Catch it, Bin it, Kill it Poster:**

## **Annex C: Flow Chart if pupils or staff become unwell**



## **Our Lady of Lourdes Catholic Multi Academy Trust Mission Statement**

We are a partnership of Catholic schools and our aim is to provide the very best Catholic education for all in our community and so improve life chances through spiritual, academic and social development.

We will achieve this by:

Placing the life and teachings of Jesus Christ at the centre of all that we do.

Following the example of Our Lady of Lourdes by nurturing everyone so that we can all make the most of our God given talents.

Working together so that we can all achieve our full potential, deepen our faith and know that God loves us.

Being an example of healing, compassion and support for the most vulnerable in our society.

***Galatians 5:22-23: "God's Spirit makes us loving, happy, peaceful, patient, kind, good, faithful, gentle, and self-controlled. There is no law against behaving in any of these ways."***



## Context

In light of the need for children to behave differently when they return to school, and the new systems, St Patrick's have put in place to support that. This Addendum supplements the schools Behaviour policy (Sept 2019) in line with the following government guidelines as pupils begin to return to school following the lifting of Coronavirus lockdown measures.

<https://www.gov.uk/government/publications/preparing-for-the-wider-opening-of-schools-from-1-june/planning-guide-for-primary-schools#annex-c-posters>

**Pupils' Behaviour both in and out of school is expected to be in line with St Patrick's current Behaviour policy. This Addendum relates specifically to the current government guidelines for pupils returning to school as Coronavirus restrictions are lifted and may change as Government guidance changes. Failure to follow the measures set out in the Addendum could potentially lead to sanctions being imposed in line with St Patrick's Behaviour Policy. We accept that our younger children will need additional help and support from staff to follow these guidelines and, as ever, our staff will be very positive in how they remind younger children of how they can stay safe.**

### 1. Altered routines for arrival or departure:

Pupils will be allocated a time to arrive in school which will be staggered for groups of children, being assigned to the front or back entrance drop off points. This is to minimise the amounts of adults congregating on the school premises at the same time. Adults will drop the children off at the school gate and not come into the playground. The pupils will come into their allocated area of school using an outside door.

### 2. Instructions on hygiene, such as handwashing and sanitising (see Annex A):

- Pupils will wash their hands on arrival and departure from school.
- Pupils will be taught the appropriate technique for hand washing (see poster Annex A)
- Pupils will be expected to wash their hands before and after going to the toilet.
- Pupils will be instructed to not touch door handles/handrails but use elbows to open doors.
- Hand sanitiser will be provided in all classrooms.
- Soap will be available in all washrooms.

### 3. Instructions on who pupils can socialise with at school;

- Pupils must stay within their own 'social bubble' both in the classroom and at break and lunchtimes.
- Staff will aim to keep pupils 2m apart from other pupils and staff within their bubble and will issue reminders as necessary.
- DfE guidance recognises that: ***unlike older children and adults, children in the early years cannot be expected to remain 2 metres apart from each other and staff.*** The full DfE guidance on Social Distancing in EYFS can be found through the following weblink: <https://www.gov.uk/government/publications/preparing-for-the-wider-opening-of-early-years-and-childcare-settings-from-1-june/planning-guide-for-early-years-and-childcare-settings#Section8>

### 4. Moving around the school as per specific instructions



5. Pupils will follow signage at all times, using the one way system around school. However, all movement around school will be kept to an absolute minimum. Pupils will be strongly encouraged to follow the 2m social distancing measurements.
6. **Expectations about sneezing, coughing, tissues and disposal ('catch it, bin it, kill it') and avoiding touching your mouth, nose and eyes with hands (Annex B)**
  - Pupils must follow 'Catch it, Bin it, Kill it' protocol when sneezing/blowing nose.
  - Pupils must bin any used tissues immediately; bins will be provided in classrooms and around the school to dispose of tissues.
  - Pupils must wash their hands after blowing their nose.
  - Pupils will have tissues at their desks but are advised to bring their own where possible.
  - Pupils must not sneeze in the face of another person; any pupil deliberately sneezing in the face of another pupil or member of staff will encounter sanctions as per the Behaviour policy.

**'Catch it Bin it Kill it'** posters to be displayed in classrooms/toilets/staffrooms/outdoors where possible

7. **Tell an adult if you are experiencing symptoms of coronavirus (Annex C; Flow chart if pupils/staff become unwell)**
  - Pupils must tell an adult immediately if they have any of the following symptoms:

**Common Symptoms of coronavirus**

- Fever/high temperature
- New continuous cough
- Loss of taste or smell

**Other less common symptoms of coronavirus include:**

- Shortness of breath or difficulty breathing
- Chills
- Muscle pain
- Sore throat
- Persistent runny nose

**Parents must inform school immediately if there are any changes to home/mobile telephone numbers.**

- **Sharing any equipment or other items including drinking bottles**
- Pupils must not share equipment.
- They will have a tray to put their own equipment into during the day.
- Pupils will self-mark.
- Pupils must not share water bottles or food.

8. **Expectations about breaks or play times, including where children may or may not play;**

The pupils will have staggered break times in a dedicated area for their group. They will be expected to stay in the given area and only play with the children within their 'bubble', socially distancing as much as possible.



#### **9. Use of toilet**

- Pupils must use the toilets one at a time
- Ensure that pupils wash hands before and after they visit the toilet.

#### **10. Rules about coughing or spitting at or towards any other person**

- Pupils must not cough or spit in the face of another person; any pupil deliberately coughing/spitting in the face of another pupil or member of staff will encounter sanctions as per the Behaviour policy.

#### **11. Rules for pupils at home about conduct in relation to remote education**

- Pupils are expected to follow the direction of the class teacher in the completion of home tasks set, in the recognition of appreciation to the pupil and their family's individual circumstances.

##### **Rewards and sanction system where appropriate:**

- See the St Patrick's Behaviour policy

#### **12. Pupil Transport:**

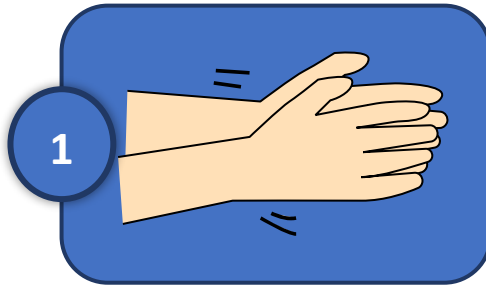
- Pupils are expected to conform to the standards of behaviour set out within the St Patrick's (school name) own policy and those of any public/private transport company they use to get to or from school, including any social distancing rules specified by these companies.
- Reports of misbehaviour on public/private transport to or from school, will incur sanctions as per the schools Behaviour policy.

Individual risk assessments will be carried out for pupils with behaviours requiring greater adult intervention. These will be carried out with the child's parents, child's class teacher and overseen by the school's SENCO to ensure that appropriate provision is in place. External agencies may also be consulted and their advice actioned. If appropriate, there may be adjustments made to the structure of the day for the needs of the child. These assessments are open for review.

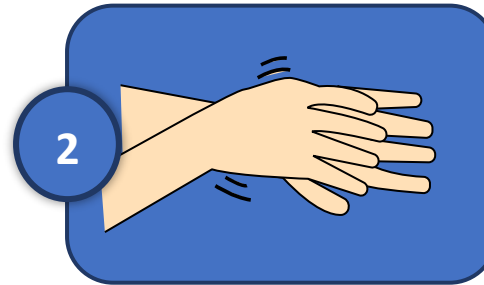
Any changes to the above will be communicated to parents.



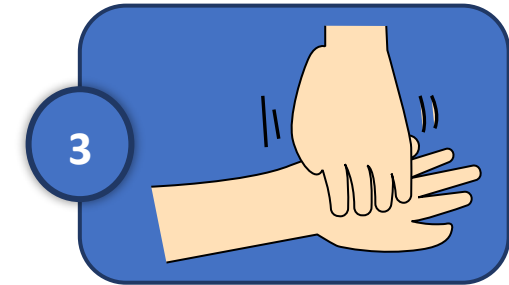
## Annex A: Hand washing Poster



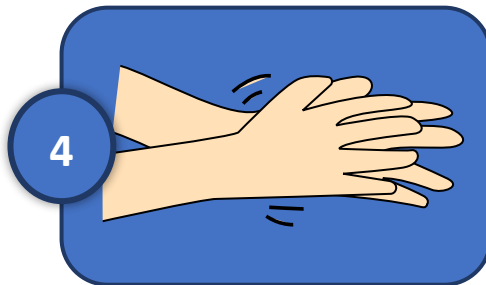
Wet hands with water,  
apply soap and rub hands  
palm-to-palm



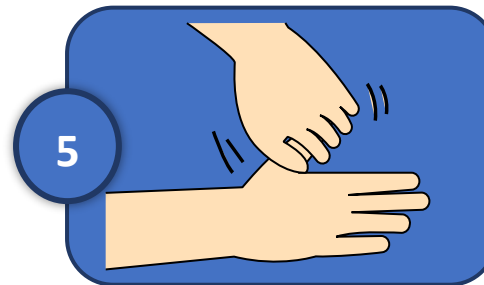
Rub back of each hand  
with opposite palm



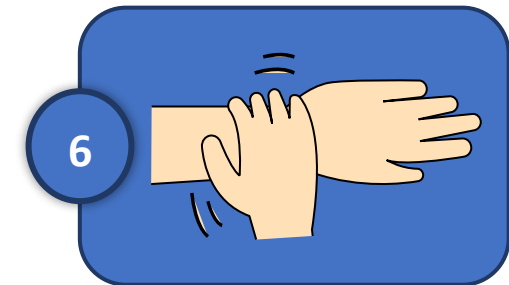
Rub fingertips on opposite  
palms to wash under nails



Rub between fingers



Rub each finger, thumb  
clasped in opposite hand



Rub Wrists



Annex B: Catch it, Bin it, Kill it Poster:

# CATCH IT

Germs spread easily. Always carry tissues and use them to catch your cough or sneeze.



# BIN IT

Germs can live for several hours on tissues. Dispose of your tissue as soon as possible.



# KILL IT

Hands can transfer germs to every surface you touch. Clean your hands as soon as you can.



© Crown copyright 2007. All rights reserved. Reproduced with the permission of the Controller of Her Majesty's Stationery Office.





## Covid-19: Signs and Symptoms and Flow Chart for Head teachers and Staff members



### The most common symptoms of coronavirus are:

- Fever/high temperature
- New continuous cough
- Loss of taste or smell

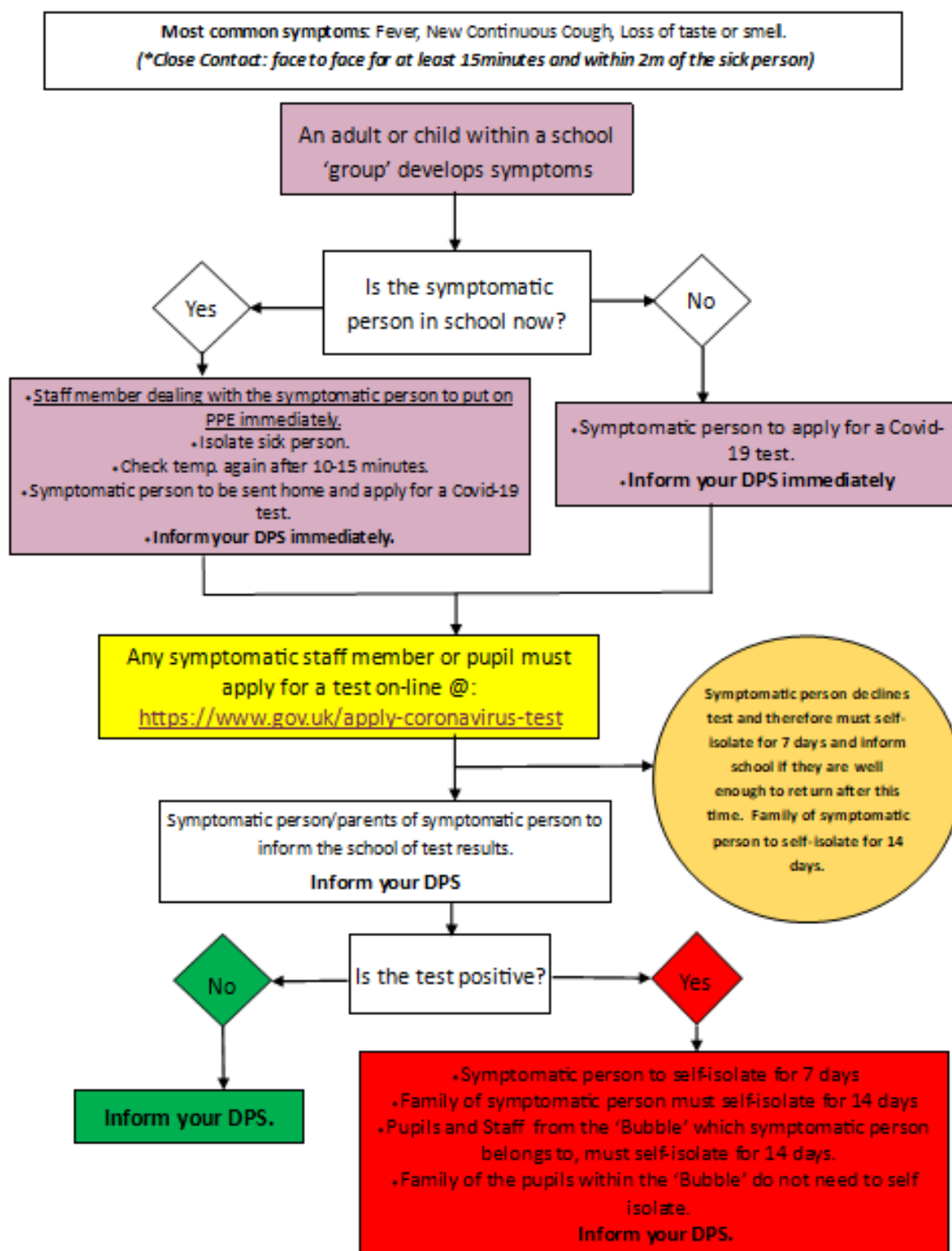
**Us the Flow Chart on the following page**

**Please note:** Only when the child/young person or staff member **tests positive**, should the rest of their class or group within their childcare or education setting should be sent home and advised to self-isolate for 14 days. The other household members of that wider class or group do not need to self-isolate unless the child, young person or staff member they live with in that group subsequently develops symptoms.

<https://www.gov.uk/government/publications/coronavirus-covid-19-implementing-protective-measures-in-education-and-childcare-settings/coronavirus-covid-19-implementing-protective-measures-in-education-and-childcare-settings#how-to-implement-protective-measures-in-an-education-setting-before-wider-opening-from-1-june>



## Coronavirus in School—Flow Chart



Contact your DPS immediately if a child/adult in your school shows any Covid-19 symptoms:

Tel: 07852133116 Email: [c.maher@ololcatholicmat.co.uk](mailto:c.maher@ololcatholicmat.co.uk)

Tel: 07852133114 Email: [m.dales@ololcatholicmat.co.uk](mailto:m.dales@ololcatholicmat.co.uk)