

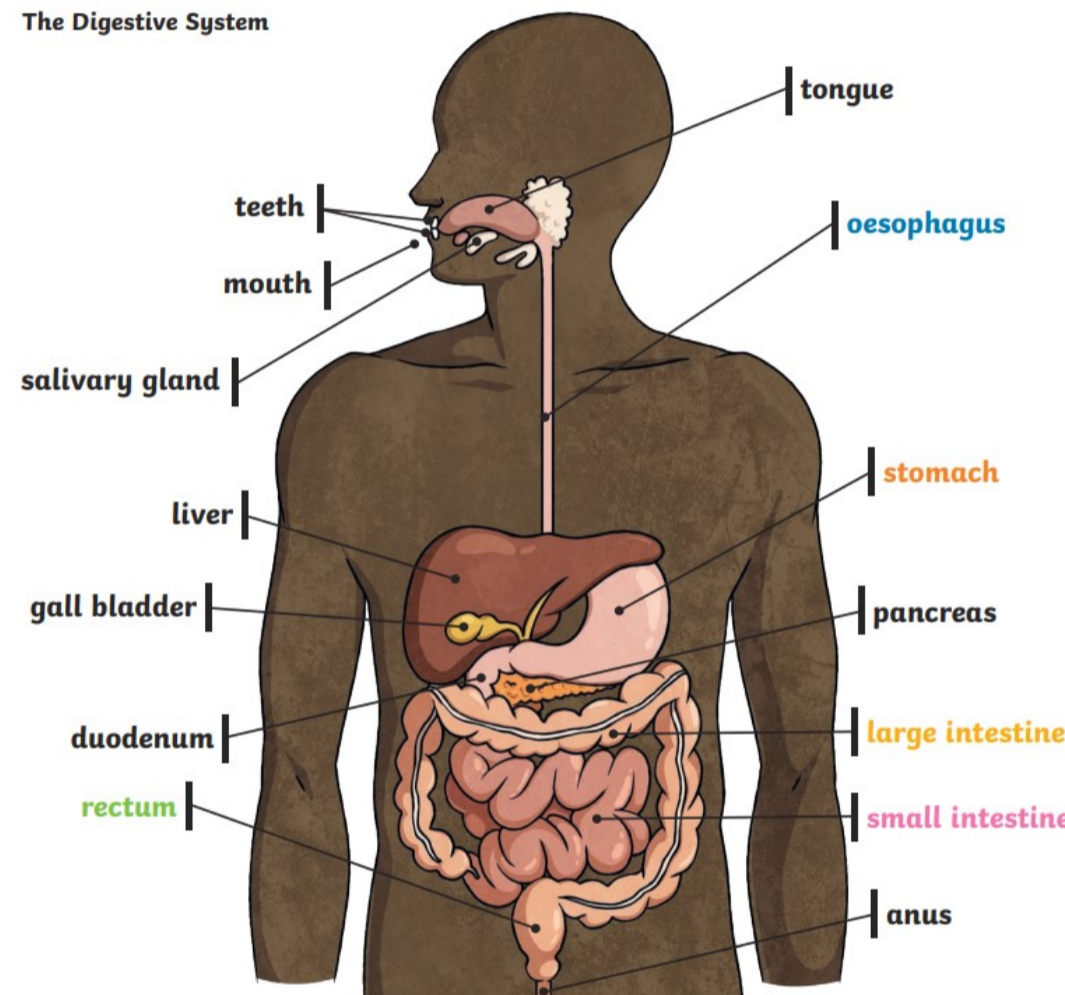
Vocabulary

Mouth	The opening in the face through which one eats, breathes and makes sounds
Tongue	The movable organ in the bottom of the mouth, used for licking, tasting, swallowing, and human speech
Teeth	Hard, white, bony objects that grow in rows in the jaws of people and animal
Oesophagus	A tube that moves food from the mouth to the stomach of an animal
Stomach	The organ in the body that receives food that has been swallowed and begins to digest it
Small intestine	The narrow part of the intestine which connects the stomach and the large intestine. The small intestine digests food and absorbs nutrients into the blood
Large intestine	The large, lower part of the intestines. The large intestine absorbs water from digested food and forms solid waste matter
Nutrients	Something in food that helps people, animals, and plants live and grow
Absorb	To take in or soak up
Canine	A pointed tooth between the front teeth and molars of many mammals
Incisor	In mammals, one of the four sharp teeth located between the canines in each jaw at the front of the mouth
Molar	A large tooth located in the back of the mouth

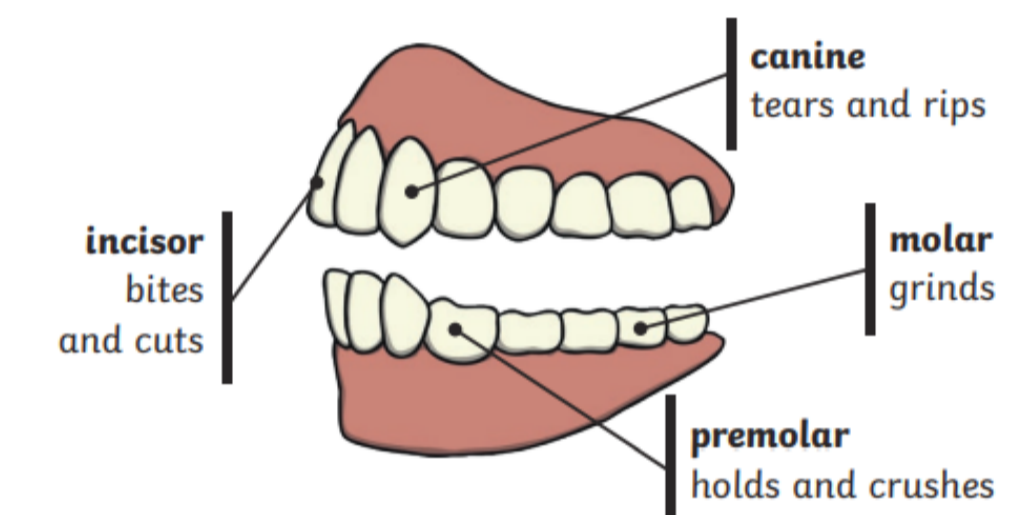
Animals including humans

Key knowledge

The Digestive System



Human Teeth and Their Functions



Some people have wisdom teeth but they have no function now.

An Example of a Food Chain

The arrows in a food chain show the flow of energy.

