



St Patrick's Catholic Primary Academy Newsletter March 10th v2

Word of the week

ALMSGIVING

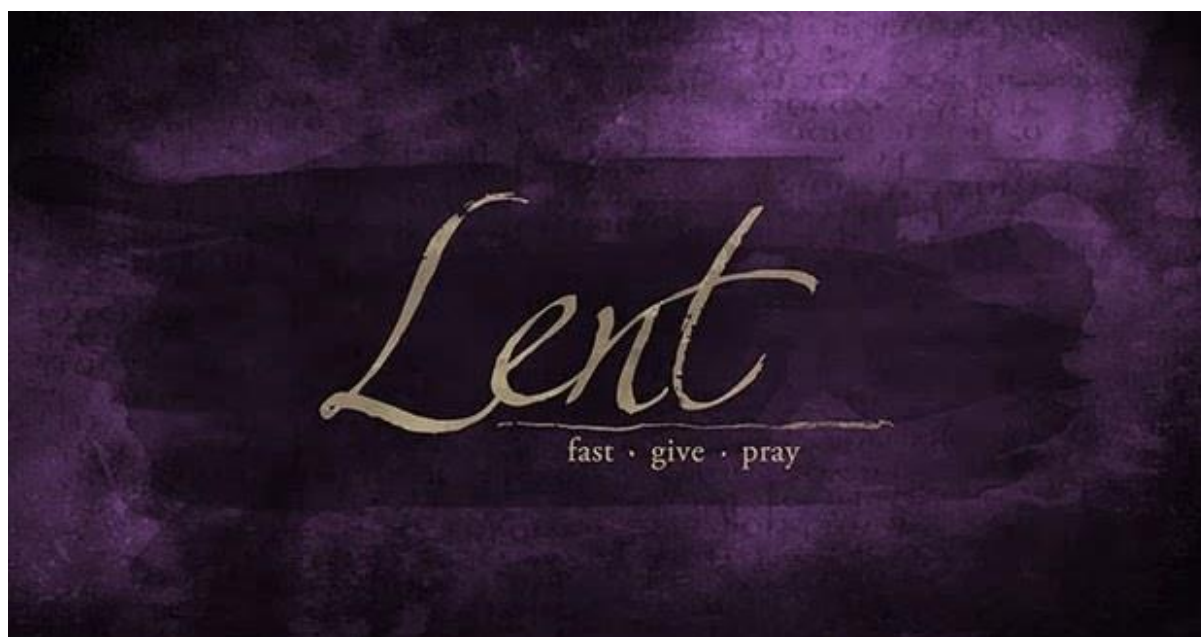


This week's work of the week has been '**Fasting**'

Next week's work of the week is: '**Almsgiving.**'

Almsgiving means simply giving what we are able to those in need. It's not just about giving money to charity however. You can give of yourself in so many ways - you can give your time, your compassion or your love to those in need and by doing so truly understand what Lent is all about

LENT



1. St. Bernadette's - Macmillan 	2. St. Oscar Romero - Dogs Trust 	3. Our Lady's - RSPCA 
4. St. George's - Make a Wish 	5. St. Therese's - Team Seas 	6. St. Patrick's - Mission Together 

St Patrick's Day

Next Friday 17th March is St Patrick's Day. On this day, St Patrick's Mass will take place in school at 9am. Following this, our children will take part in St Patrick's day activities in house teams. In the afternoon, there will be a children's only mini market, which will be raising funds for our house charities. The money raised will be shared between the house charities. We are asking for children in Y3-Y6 to plan and manage the stalls so any ideas and contributions from home would be very appreciated.



CAFOD

We have welcomed again Mrs Neale, CAFOD volunteer and Trust Director, who has worked with all pupils from Reception to Y6. They have taken part in workshops related to Catholic Social teachings. It was fantastic to see buddy classes working together so well. Mrs Neale was very impressed in the manner in which all children took part with great enthusiasm, including giving empathetic and thoughtful answers. We were extremely proud of all of them and send our very grateful thanks for the donations sent in so far for CAFOD.

Upcoming Events

Week 4

St Patrick's Day Mass – Friday 17th March 9am

St Patrick's Day Mini Market raising funds for house charities (Children only) – Friday 17th March

Week 5

Buddy Mass EYFS/Y1 – Tuesday 21st March

Whole school mass led by Y6 – Tuesday 28th March

Stations of the Cross – Friday 31st March 9am

First Holy Communion



We are extremely proud of the children who made their First Confession this week. The Sacrament of Reconciliation is such a special part of the children's journey and is particularly pertinent during

Lent, so we are really proud of them all. Our thanks to all of their families and catechists for supporting them too as well to Father John and Father Marc. During this season of Lent, we encourage you all to take the opportunity to receive this special Sacrament too.

Dates for Holy Communion Sessions- Sessions take place in school from 3.20-4.20pm.

- Monday 13th March
- Monday 20th March
- Monday 27th March
- Monday 17th April
- **Sunday 23rd April – Preparation Mass 11am St. Patrick's Church**
- Monday 24th April
- **Sunday 14th May – Preparation Mass 11am St. Patrick's Church**
- Monday 15th May
- Monday 22nd May

Book Fair



Throughout next week, each class have a scheduled time to visit the book fair to explore the different books available. It will also be open to families to come and visit and to purchase from 3.20pm every day. Although cash payments are preferred, online card payments will also be available.

Competition time!

Win a £25 voucher to spend at our travelling book fair which will be at St Patrick's from the 13th to the 17th March.

All you have to do is design a new book cover for one of your favourite books or a completely new book. It can be whichever you choose!

When completed, please bring your entries into school and send them with your name and year group to Miss Godfrey in Y6 by Wednesday 8th March. The winner of the competition will be announced on Friday 10th of March, ready for the arrival of our travelling book fair on Monday the 13th March.

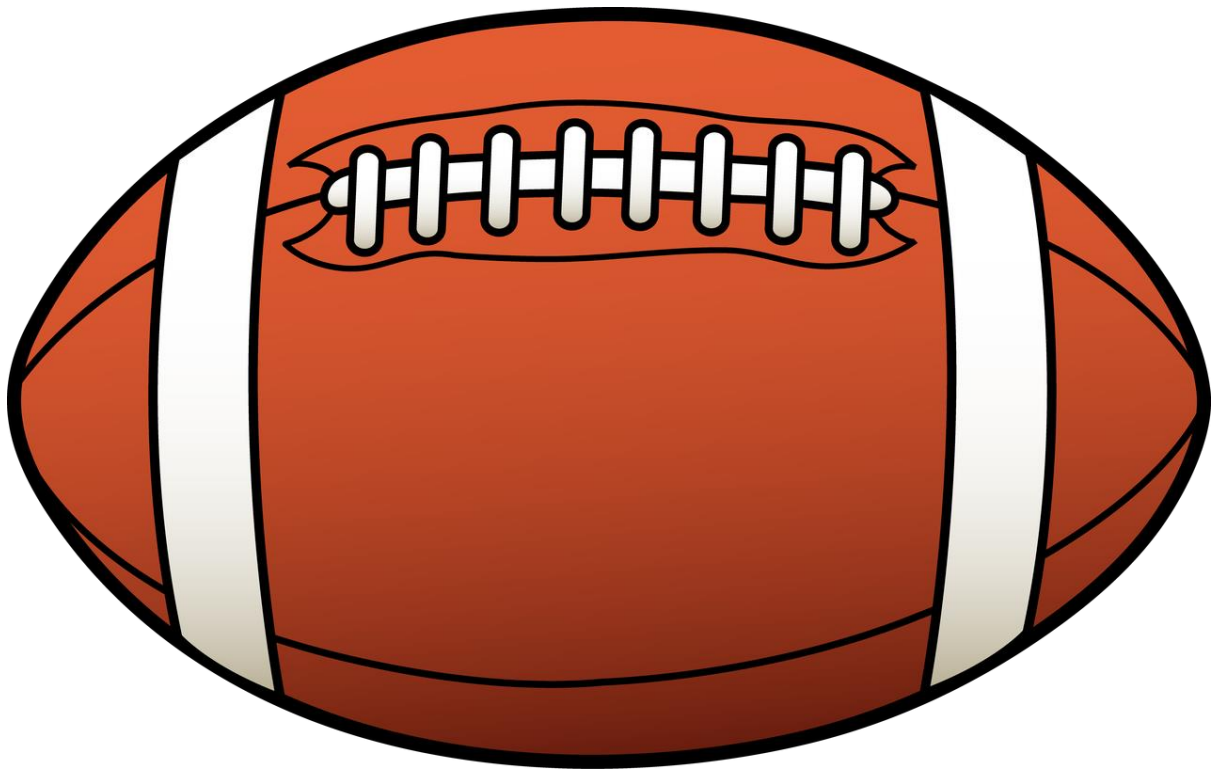
We can't wait to see all of your creativity shine!

Swimming



Swimming will continue for Y4 next week. Please make sure your child has their kit on Monday morning.

Tag Rugby



Well done to a group of Y5/6 pupils who took part in a Tag Rugby Competition this week. They worked really hard together and had a great team effort. Many thanks to Miss Whelan and Miss Godfrey for accompanying the children and to the children's parents for their support with this activity.

Children's Well - being

NottAlone

[Home](#)

[About](#)

[Browse](#)

[Feedback](#)

I'm a...
Young Person



Local mental health advice and help for young people in Nottingham and Nottinghamshire.



I need help with...



Please find details of the following websites which contain very helpful resources to support the well-being of ourselves as adults and our young people. The information is also useful for older siblings.

Nottshelpyourself

<https://www.nottshelpyourself.org.uk/kb5/nottinghamshire/directory/home.page>

Nottalone

<https://nottalone.org.uk/?a=yp>

Please contact your child's class team should you wish to discuss any aspect of their well-being.

E-Safety

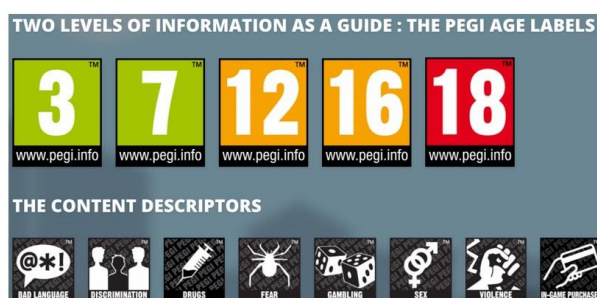
Stay safe online
Remember the 5 SMART rules when using the Internet and mobile phones.

- S SAFE:** Keep safe by being careful not to give out personal information – such as your full name, email address, phone number, home address, photos or school name – to people you are chatting with online.
- M MEET:** Meeting someone you have only been in touch with online can be dangerous. Only do so with your parents' or carers' permission and even then only when they can be present.
- A ACCEPTING:** Accepting emails, IM messages, or opening files, pictures or texts from people you don't know or trust can lead to problems – they may contain viruses or nasty messages!
- R RELIABLE:** Information you find on the internet may not be true, or someone online may be lying about who they are. Make sure you check information before you believe it.
- T TELL:** Tell your parent, carer or a trusted adult if someone or something makes you feel uncomfortable or worried, or if you or someone you know is being bullied online.

Find out more at Childnet's website ...

PEGI rating system: Choosing age-appropriate games for your child.

PEGI stands for Pan European Game Information and is the most prominent video game age rating system in the UK and the EU.



PEGI 3

The majority of games in this category do not contain anything that requires rating or warrants a content warning. Games given this rating are considered suitable for all age groups. Some violence in a comical context or child-friendly setting is acceptable, as is nudity when shown in a completely natural and non-sexual manner, such as breastfeeding.



PEGI 7

Any game that would normally be rated at 3 but contains some possibly frightening scenes or sounds may be in this category. A little more violence is permissible at PEGI 7. It is always unrealistic and often directed towards fantasy characters, though very mild non-realistic violence to humans may also feature. Implied violence (for example the bombing of a city where violence is not seen directly) is also dealt with at this level.



PEGI 12

At a PEGI 12 level more graphic and realistic-looking violence towards fantasy characters is allowed. Any violence towards human characters must look unrealistic unless it consists of only minor or trivial injury such as a slap. Sexual posturing of the type often seen in music videos is also allowed at this level as is sexual innuendo. Some bad language is allowed but it can be no more than mild swearing. PEGI 12 is the minimum rating a game which teaches or encourages gambling can receive, though the descriptor also appears on PEGI 16 and PEGI 18 games. A game at this level may feature horror content, such as strong threat and dread or graphic injury details.



PEGI 16

At the 16 level you can expect to see more mature and realistic violence against human characters. The game may deal heavily with death and injury to humans. Gory and bloody violence may be included at a PEGI 16 level but only if the game is arcade style. Sexual activity can be shown but it

must not include visible genitals. Depictions of erotic nudity may feature. The worst forms of bad language can be heard and will often include sexual expletives. The use of tobacco and alcohol may be encouraged, and the game can feature the use of illegal drugs. The game could glamorise crime.



PEGI 18

The adult classification is applied when the level of violence becomes 'gross'. Gross violence is classed as horrific methods of bringing death or severe injury, including torture, decapitation or dismemberment. Violence against vulnerable characters such as children and the elderly may feature, along with motiveless violence against multiple innocents. Sexual violence and threat are also classified at PEGI 18. The game may include detailed descriptions of criminal techniques, or it may glamorise the use of illegal drugs. Sexual activity with visible genitalia can be shown.

Content warnings

It can be confusing when deciding whether a video game is age-appropriate for your child or not. Age ratings are given to games for a variety of reasons based on the type of content the game depicts or includes. PEGI content descriptors are used so consumers can quickly identify what content in the game has led to the game's age rating.

Violence



This content warning indicates when there are depictions of any kind of violence. When you see this warning attached to any game you should also look at the age-rating, as the level of violence will correspond to it.

Bad language



This content warning indicates when bad language – swearing or cursing – appears in games. The level of bad language allowed will correspond to the age rating of the game. This descriptor can only be found on games with a PEGI 12 or higher rating. On PEGI 12 games, games will only include mild swearing, whereas PEGI 16 and 18 will include sexual expletives or blasphemy.

Fear



This content warning indicates when a game contains images or sounds that may be frightening. It's worth being aware that when applied to PEGI 7 games the level of fear is likely to be more comical, whilst in PEGI 12 games the fear content warning suggests elements of horror.

Gambling



This content warning indicates when a game has aspects that encourage or simulate gambling. As of 2020, all games containing gambling elements must be rated PEGI 18, but older titles rated PEGI 12 or PEGI 16 might still contain these elements. The buying of randomised 'loot boxes' (which can mimic gambling-like behaviours) can, however, remain present in games – like Roblox – which are rated as low as PEGI 7.

Sex



This content warning indicates when a game contains sexual content. Again, the level of sexual content will vary from mild innuendo and posturing in PEGI 12, erotic nudity without visible genitals in PEGI 16, to explicit sexual intercourse in PEGI 18. Remember that this warning does not apply to non-sexualised nudity.

Drugs



This content warning indicates when a game depicts drug use. In games rated PEGI 16 and PEGI 18, depictions of illegal drug use, as well as the use of alcohol and cigarettes, is allowed.

Discrimination



This applies when a game contains content depicting religious, ethnic or other stereotypes in a discriminatory manner. This content warning is fairly uncommon, as most games that actively seem to promote discrimination are in violation of national law.

In-game purchases



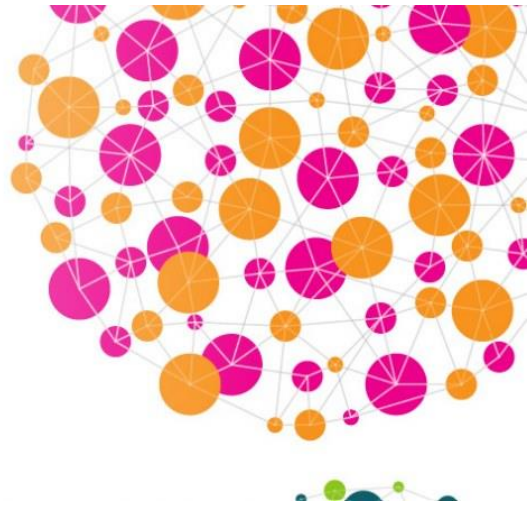
Unlike the gambling content warning, this warning applies when a game gives you the option to purchase items, additional content or upgrades with real currency. Games containing loot boxes will have this content warning applied.

Be aware that this warning is displayed underneath any other content warnings and the PEGI age rating, making it tricky to spot.

The in-game purchases warning also doesn't take the additional harms that in-game spending can cause, particularly for young children. Games containing loot boxes, for example, can promote damaging gambling behaviours, but some games rated PEGI 7 contain them.

Science Week

10-19 March
**British
Science
Week
2023**



Next week we will be taking part in **British Science Week**.

The theme is '**Connections**' and as a school we are going to look at the connection between human actions and the impact on the environment. There is a poster competition which can will be completed in school time during early week. Our science lessons will be focussed on the connection between soil erosion and its impact on the environment. In school, we will be conducting an experiment which looks at decomposition of cotton within different soil.

If you would like to complete this experiment at home as well, your children will be able to share the information with you and any photo's can be sent to the Year 1 class email address.

Governor Recruitment



We are currently recruiting for new Foundation governors to join our Local Governing Body. Our governing body meets once per half term to discuss all aspects of school life. If you would be interested in considering joining the governors, then please contact Mrs Smedley via the office to an informal conversation.



Staffing news

Finally, we would like to share with you that our wonderful Mrs Lund has been successfully appointed by Our Lady of Lourdes Trust to become a Lay Chaplain for our hub of schools. Mrs Lund has been a highly valued and much loved member of the St Patrick's staff team for over 20 years and although she will be greatly missed, we know that in this new position she will be working closely with us still, sharing and linking her many gifts, skills and talents within the Trust. We know you will like to join us in passing on our congratulations to Mrs Lund. We are blessed that Mrs Lund will continue in her position with us until the end of this academic year.

In partnership and prayer

Mrs J L Smedley