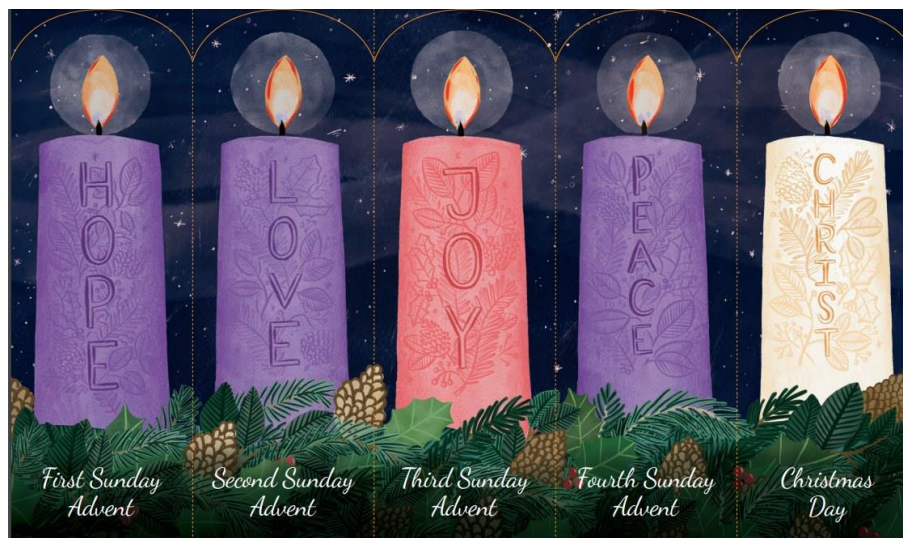




St Patrick's Catholic Primary Academy Newsletter: Friday 6th December



Catholic Life and Mission - First Week of Advent

This week's word of the week was: **Hope**. Thank you to Y5 and Y6 for launching our Advent season and to all children and staff for their beautiful contributions in creating visible signs of Advent in and around school.

Next weeks word of the week is: **Peace**

In a world that's often filled with conflict and turmoil, we're called to be peacemakers. This doesn't mean simply avoiding arguments, but actively working towards reconciliation and

understanding. In the season of Advent, we pray for peace in the world. Jesus is the Prince of Peace, and he calls us to follow his example and to be peacemakers too.

Mission: Find a way to bring peace to a difficult situation or relationship this week.

Celebration of the word

On Monday at 9am, our Celebration of the word is being led by Y3 and Y4. Please feel very welcome to attend this advent liturgy.

Mass

Our next mass in school is Tuesday 17th December at 9am. - this is a whole school mass

Behaviour Virtues

This year we are introducing the behaviour virtues to support the children in making the right choices.

Over the course of the year the following virtues will be introduced and reinforced with the children.

- Faith and Love
- Hope
- Temperance
- Justice
- Courage
- Solidarity

Last half term, we introduced 'Faith and Love'. We shared ways that the children can live these out. Throughout this half term, children will be recognised and rewarded for living out these virtues.

This half term we are focusing on the behaviour virtue 'Hope'.

Hope isn't just wishful thinking, but a confident expectation of God's promises. Hope is a powerful virtue that can give us strength to persevere, even when things get tough, and to trust that God is always with us, guiding us towards a brighter future.

“Those who hope in the LORD will renew their strength. They will soar on wings like eagles; they will run and not grow weary, they will walk and not be faint.” Isaiah 40:31

Ways that children can show hope:

I have hope when:

- I am positive
- I believe that God had a plan for me
- I don't give up when things are hard
- I have hopes and dreams for the future
- I try my best in all that I do
- I support others to be the best they can be

School Calendar

A festive poster for school advent events. It features a light beige background with a subtle pattern of stars and snowflakes. At the top, there are yellow stars and a small angel illustration. The title 'Advent events in school 2024' is in a bold, black font. Below it, the text 'Advent Week 1 - Word of the Week - Hope' and '2nd Dec 2024' is displayed. A table with three columns (Year Group (s), Event, Date place and time) lists the events for the week. At the bottom, there is a large illustration of the Virgin Mary holding the baby Jesus, with Joseph standing next to them. The scene is decorated with palm trees and small angels.

Advent events in school 2024


Advent Week 1 - Word of the Week - Hope
2nd Dec 2024

Year Group (s)	Event	Date place and time
Y5 and Y6	Celebration of the Word	Mon 2nd Dec @ 9am in hall
F2, Y1, Y2 and Y3	Mass	Tues 3rd Dec @ 9am in hall
Y2	Trip to Mansfield Museum	Wednesday 4th
Y3	Celebration of the Word	Thurs 5th Dec@ 2.30pm in classroom
Y4	Celebration of the Word	Thurs 5th Dec @ 2.30pm in classroom
Whole school	Non Uniform Day In exchange for selection box	Friday 6th Dec

Advent events in school 2024

Advent Week 2 - Word of the Week - Peace
9th Dec 2024

Year Group (s)	Event	Date, time and place
Y3 and Y4	Celebration of the Word	Mon 9th Dec @ 9am in school hall
F2, Y1 and Y2	Nativity:	Mon 9th Dec @ 2.15pm in school hall
F2, Y1 and Y2	Nativity:	Tues 10th Dec @ 9am in school hall
Y6	Celebration of the Word	Tues 10th Dec @ 2.30pm in classroom
Y5	Celebration of the Word	Tues 10th Dec @ 2.30pm in classroom
Y3 and Y4	Carol Concert	Wed 11th Dec @ St Philip's Neri Church 5pm
F1 (Nursery)	Nativity	Thurs 12th Dec @ 9am in EYFS
Whole school	Christmas jumper, dinner and market day	Thurs 12th Dec @ 2.15pm in school hall
Y1	Celebration of the Word	Y1 classroom Friday 13th Dec @ 2.30pm
Y2	Celebration of the Word	Y2 Classroom Friday 13th Dec @ 2.30pm




Advent events in school 2024

Advent Week 3 - Word of the Week - Joy
16th Dec 2024

Year Group (s)	Event	Date, time and place
Y1 and Y2	Celebration of the Word	Mon 16th Dec @ 9am in school hall
Whole School	Mass	Tues 17th Dec @ 9am in school hall
Whole school	Christmas party day	Thursday 19th Dec Children can come in party clothes (snacks provided)
KS2 (Y3 -Y6)	Carol Concert	Fri 20th Dec @ 9am in school hall

Break up for Christmas Holiday -
Return to School Monday 6th
January



Please see the posters which show the events during Advent

PTA Event

Many thanks for your very generous chocolate donations from the non uniform day which will go towards the Christmas Market stalls.

The PTA Christmas Disco is on Monday 9th December

Foundation stage 1 and Key stage 1 - 4 - 5.15pm (An adult must attend)

KS2 - 5.15 - 6.30pm (Adults can drop off and pick up)

EYFS and KS1 Nativities

We are really looking forward to welcoming you to the EYFS and KS1 Nativity; 'Jesus in the Manager'.

The first performance will be at 2.15pm on Monday 9th December and the second performance will be at 9am on Tuesday 10th December.

Both entrance gates will be opened 10 minutes before the start of the afternoon performance and for the morning performance we would please ask you to wait at the Reception following the morning drop off. Please can we ask that everyone is considerate to our surrounding neighbours when parking so as not to obstruct their driveway or park on yellow zig zag lines.

After each performance, the children will be welcomed back onto the stage so that parents and carers are able to take photos of their own child in front of the Nativity scene. We respectfully ask that videos and photos are not taken during the performance.

Christmas jumper, dinner and market day

Thursday 12th December is our annual Christmas jumper, dinner and market day.

Pupils are welcome to wear a Christmas jumper, top or dress to school. If they are wearing a jumper or top please can this be worn alongside school uniform.

The children will be eating their dinner with their house team.

Gates will open at 2.15pm for the Christmas market. Please collect your child/children from their classroom as per normal end of the day arrangements and then enter the hall via the door from the main playground. Once you have visited the market you are then welcome to take your child home.

Attendance and Punctuality

Equates to 2 days off a year.	99%	Excellent attendance
Equates to 5 days off a year.	97%	Good attendance
Equates to 10 days off a year.	95%	Slight concern
Equates to 20 days off a year.	90%	Concerned
Equates to 30 days off a year.	85%	Very concerned

1 - F2: 92.7% Y1: 95.8% Y2: 97%

Y3: 96.7% Y4: 96.9% Y5: 96.3%

Y6: 95.6% Total: 96.2%

As a school, we are committed to ensuring everyone attends school as much as they are able to and therefore ask for your support in light of these changes.

To report your child's absence please can we ask that you email the school office on office@st-patricksrc.notts.sch.uk or ring school on 01623 478090.

Please see the NHS Guidance for the latest advice regarding sending your child to school with the following medical conditions: <https://www.nhs.uk/live-well/is-my-child-too-ill-for-school/>

In line with the Trust's Attendance policy, school is unable to authorise absences of leave during term time, unless the reason falls the exceptional criteria. Fines may also be issued as part of the Trust's attendance policy for absences of leave during term time which are unauthorised.

The Lime Trees Breakfast and after school club

The Lime Trees breakfast and after school club is now fully up and running.

The Lime Trees story is rooted in helping and supporting each individual family.

Our aim is to deliver a service that we, as parents, would be proud to use. Putting parents and families first, we realise that flexibility of childcare is essential for meeting the needs of modern family life. We allow parents to manage the care of their children around their schedule and not the other way around.

We provide a flexible service where you can book the sessions that work best for you our online booking system located on our website www.thelimetrees.co.uk

You will need to register your child/children before you are able to make a booking. For more information on how to register, book your place, make a payment and general FAQ's please visit our website www.thelimetrees.co.uk

We are delighted to be able to confirm that the Breakfast club will now be available from 7.30am and the after school club available till 6pm.

Breakfast club runs from 7.30am to 8.30am at a cost of £5.25.

After school club runs from 3.20pm to 6pm at a cost of £9.80.

*Parents will also be able to use childcare vouchers and the governments Tax Free Childcare scheme.

How to find us. The clubs will be located in the dining hall within the school. Keep in touch & stay up to date. If you have any immediate questions, please refer to our website or alternatively you can contact us on 0115 9313 562 or email enquiries@thelimetrees.co.uk.

For up-to-date news and promotions follow us on Facebook and Instagram, just search for The Lime Trees.

Dropping off and collecting children.

Please can we ask for everyone's support in supervising children during the dropping off and collecting of children as they should not be on the outdoor apparatus. We have shared this with all children and would really appreciate if this message could be reinforced by yourselves. Could we also ask for everyone's support whilst parking their vehicles on Ling Forest Road; please avoid blocking driveways and consider parking further away from school to help with congestion. Many thanks

First Admission to school

First Admissions to Primary School September 2025

Please see the admissions information below regarding applying for a place in school for September 2025.

Applying for a place in school for an F2 place.

If you live in Nottinghamshire and **require a school place for your child in September 2025**, you will be contacted by Nottinghamshire County Council with further information and their Admissions form which must be completed so an F2 place can be allocated.

If you do not receive any information from Nottinghamshire County Council, please call the Admissions Team on this number: 0300 500 8080.

If you are applying on faith grounds you will also need to complete our supplementary form which is available from the school office or via school website.

An allocation of a place in Nursery does not grant a place in Main School.

All applications must be made via Nottinghamshire County Council.

First admissions dates to remember:

Children starting school for the first time. Relevant age group: Reception: children born between 01 September 2020 and 31 August 2021

National open date for applications: 4th November 2024

National closing date for applications: 15th January 2025

It is extremely important that you complete your application on time.

Applications received after the closing date will be ranked and considered as late applications.

Please use this link for the parents' guide to admissions:

[admissions to schools: guide for parents \[PDF\]](#)

Communication with school and staff

Following consultation with staff we have made the decision to move from using class email address to the staff named email address. After today, the class email addresses will no longer be in use and will not be checked.

If you have a message that needs to be shared the same day please contact the office on 01623 478090 or email via office@st-patricksrc.notts.sch.uk. Messages can then be passed on to the relevant member of staff. Our phone lines are open from 8pm to 4pm and the office email is also monitored during these times.

If you email specific staff, there is a 48 hr turn around for a response.

Please see below for staff email addresses.

Mrs Lowe : nlowe@st-patricksrc.notts.sch.uk

Miss Robinson: krobinson@st-patricksrc.notts.sch.uk

Mrs Pugh: hpugh@st-patricksrc.notts.sch.uk

Mrs Gripton: lgripton@st-patricksrc.notts.sch.uk

Mrs Wilson: lwilson@st-patricksrc.notts.sch.uk

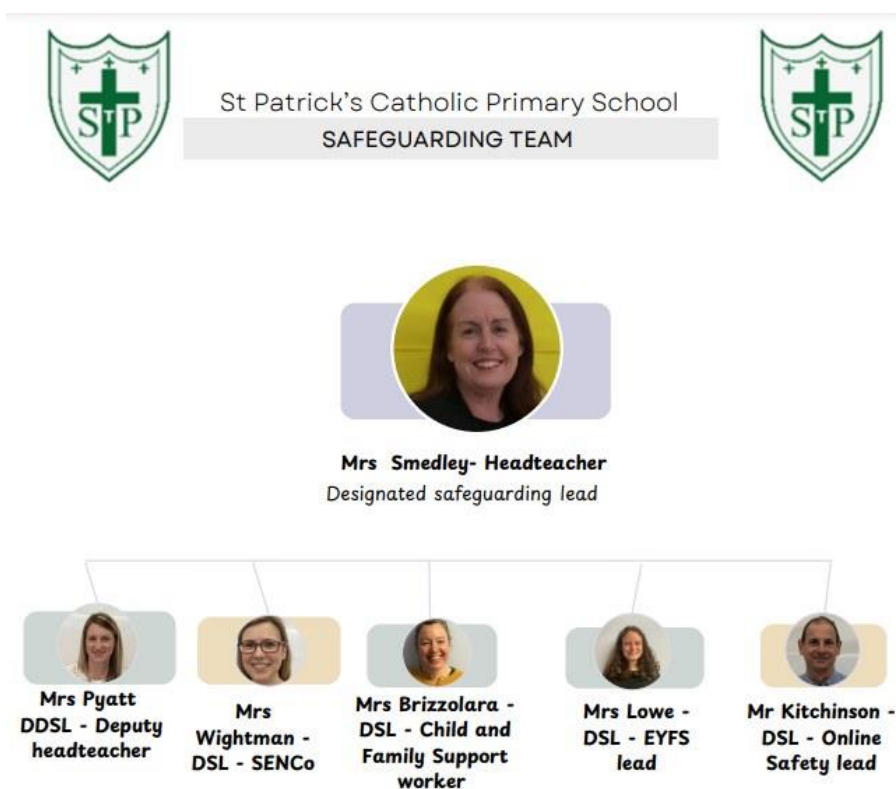
Miss Matthews: mmatthews@st-patricksrcnotts.sch.uk

Mr Kitchinson: mkitchinson@st-patricksrc.notts.sch.uk

PTA Calendars



Safeguarding



If you are worried about something and would like to talk then please speak to one of the safeguarding team.

Please see the attached poster which shows the DSL's within school. If you have any safeguarding concerns please contact one of the members of staff.

Have a lovely weekend,

In partnership and prayer

Mrs J L Smedley

Miss Brunskill: ebunskill@st-patricksrc.notts.sch.uk

Miss Pearce: epearce@st-patricksrc.notts.sch.uk